

ARCHAEOLOGY 101

Introduction to Archaeology

Final Examination

Date: January 22, 2004

Time: TWO hours

Instructor: Helga. Seeden

I

Identifications
50% (60 minutes)

☛ Briefly identify the illustrations (1—10) in key words or a short paragraph.

- 1.—What does the illustration **represent**?
- 2.—Where was it **discovered** and/or where is it **found** now?
- 3.—Why was it **produced**?
- 4.—Does it tell you anything about **people's practices and customs in the past**?
- 5.—Does the image mean anything **in the present**?

II

Essay questions
50 % (60 minutes)

The bullet points are intended to help you organize your thoughts.

☛ How can standing and excavated cultural heritage be made relevant in the present?

- The heritage of our past, standing monuments and excavated archaeological material and information, can become much more relevant today, if it is comprehensively presented to the public.
- The successful presentations of such heritage elsewhere, which you have studied in class or visited on your own, have given you ideas of what can be done to inspire the public to be aware of and learn more about their past, and the work needed to discover it.
Can such highly popular presentations help us in preserving and presenting the heritage in Lebanon?
- You have visited Lebanon's National Museum and its exhibition of artifacts from archaeological sites in the country.
- You have also visited the City Center of Beirut, and you studied material and information from its archaeological sites and standing historical buildings, as well as proposals for their future integration.

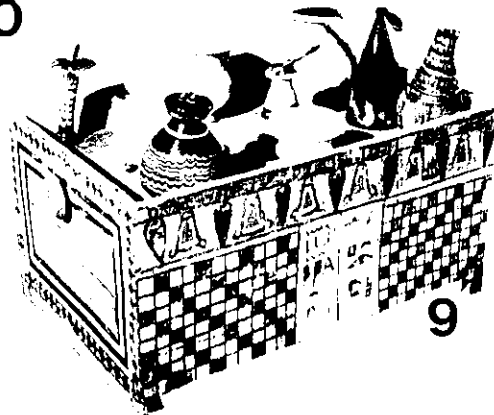
☛ Evaluate this Lebanese heritage and its existing, as well as proposed, presentations.

☛ How would YOU imagine the five thousand years of Beirut's past integrated and presented to the public in the City Center?

The area excavated at 1 Poultry

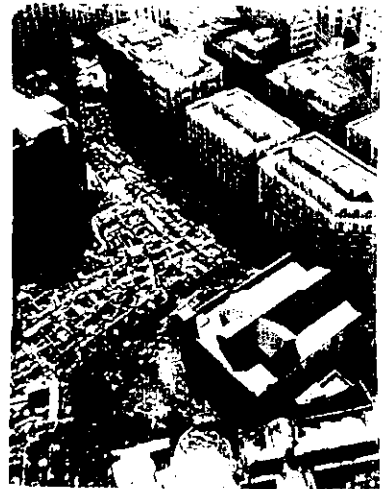


10

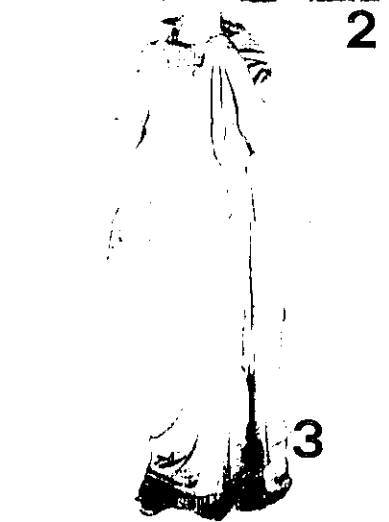


9

8

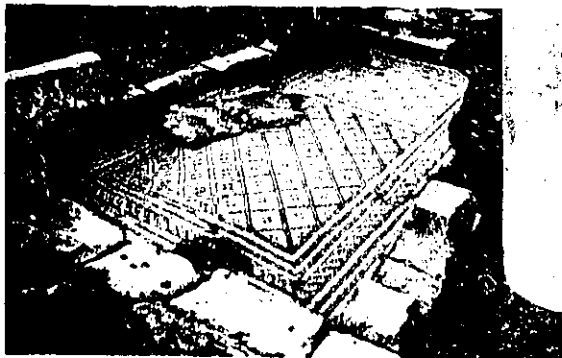


1



2

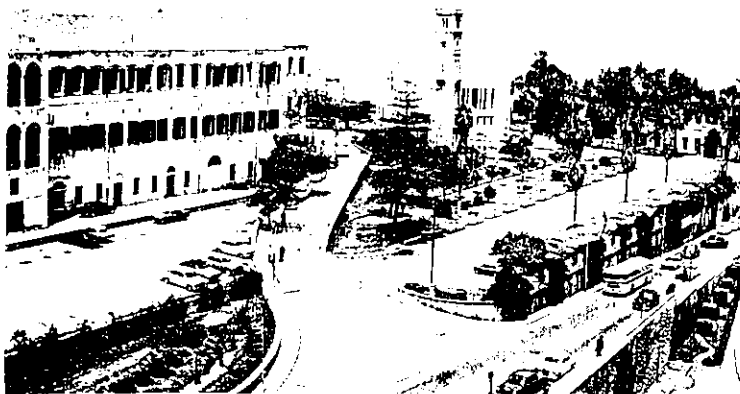
3



7



4



6



5