

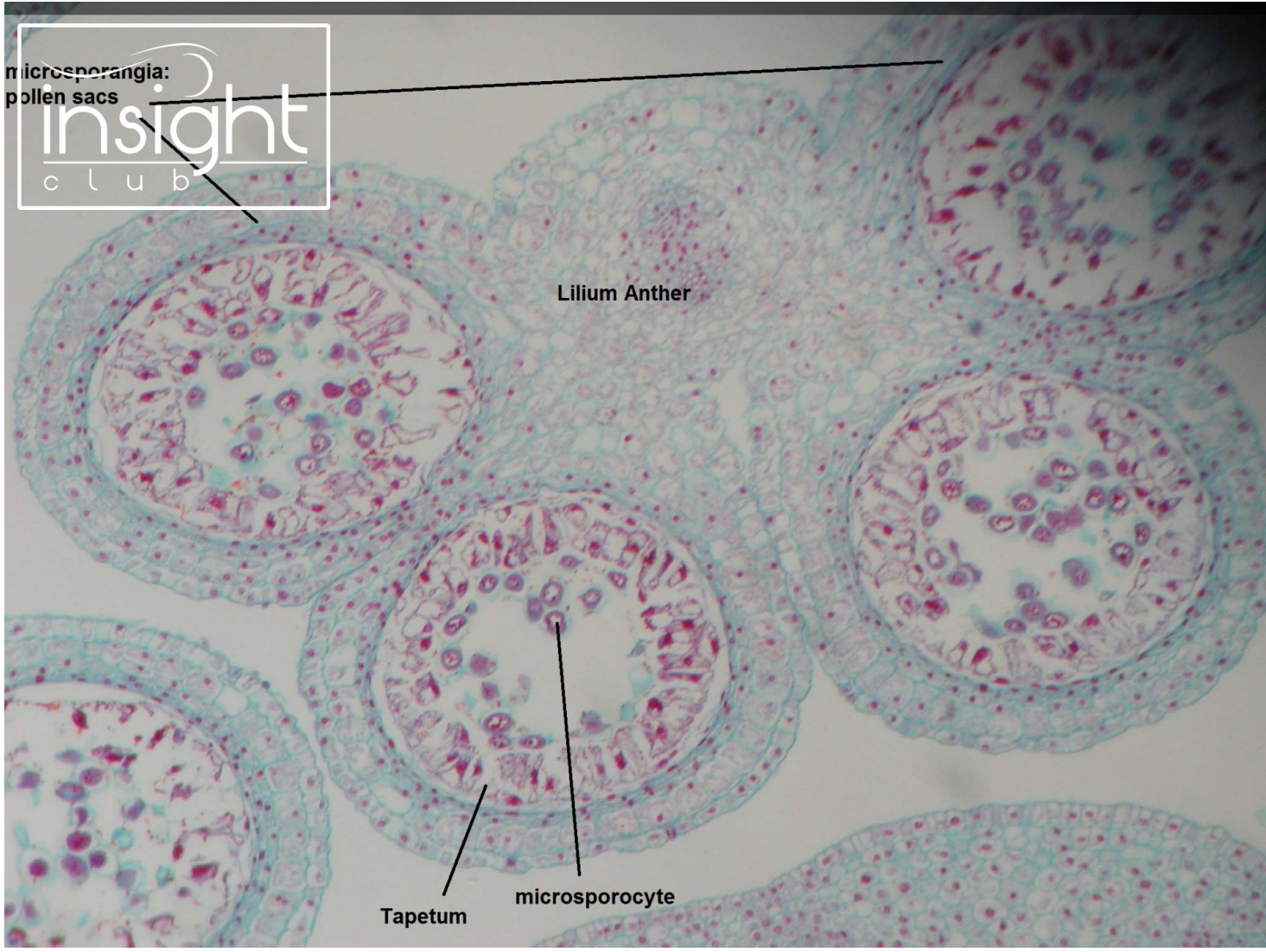
microsporangia:  
pollen sacs

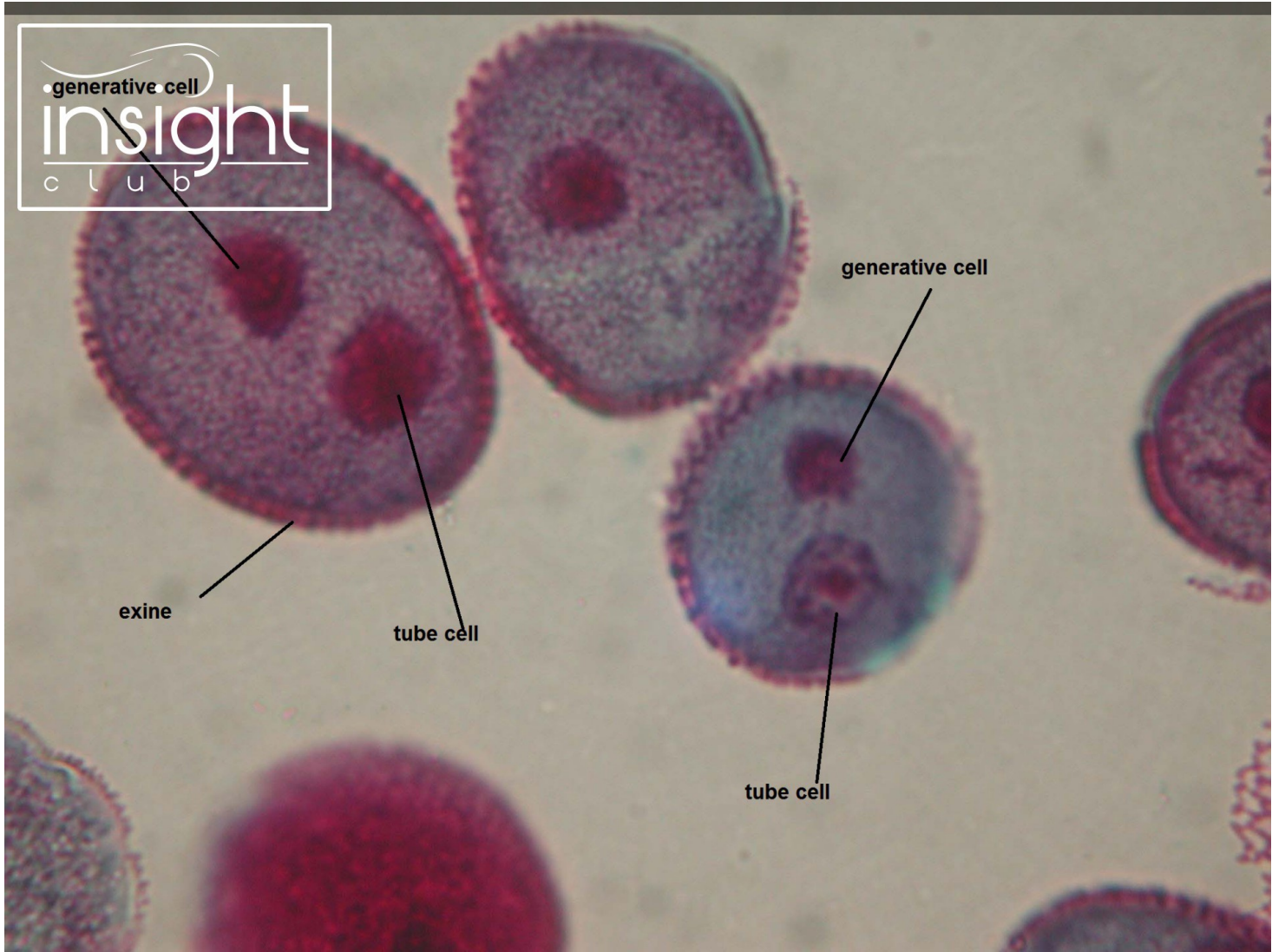
insight  
club

Lilium Anther

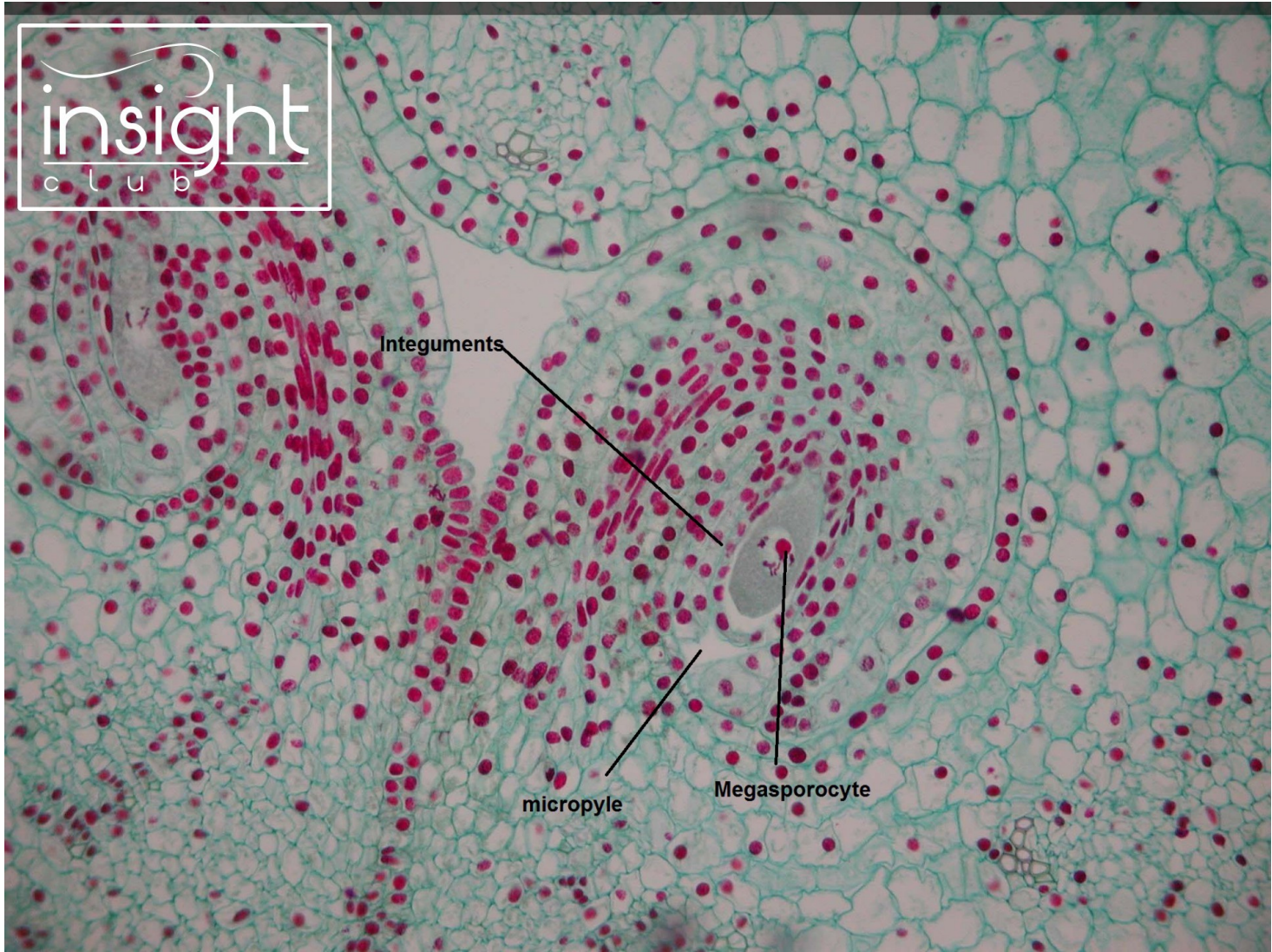
Tapetum

microsporocyte

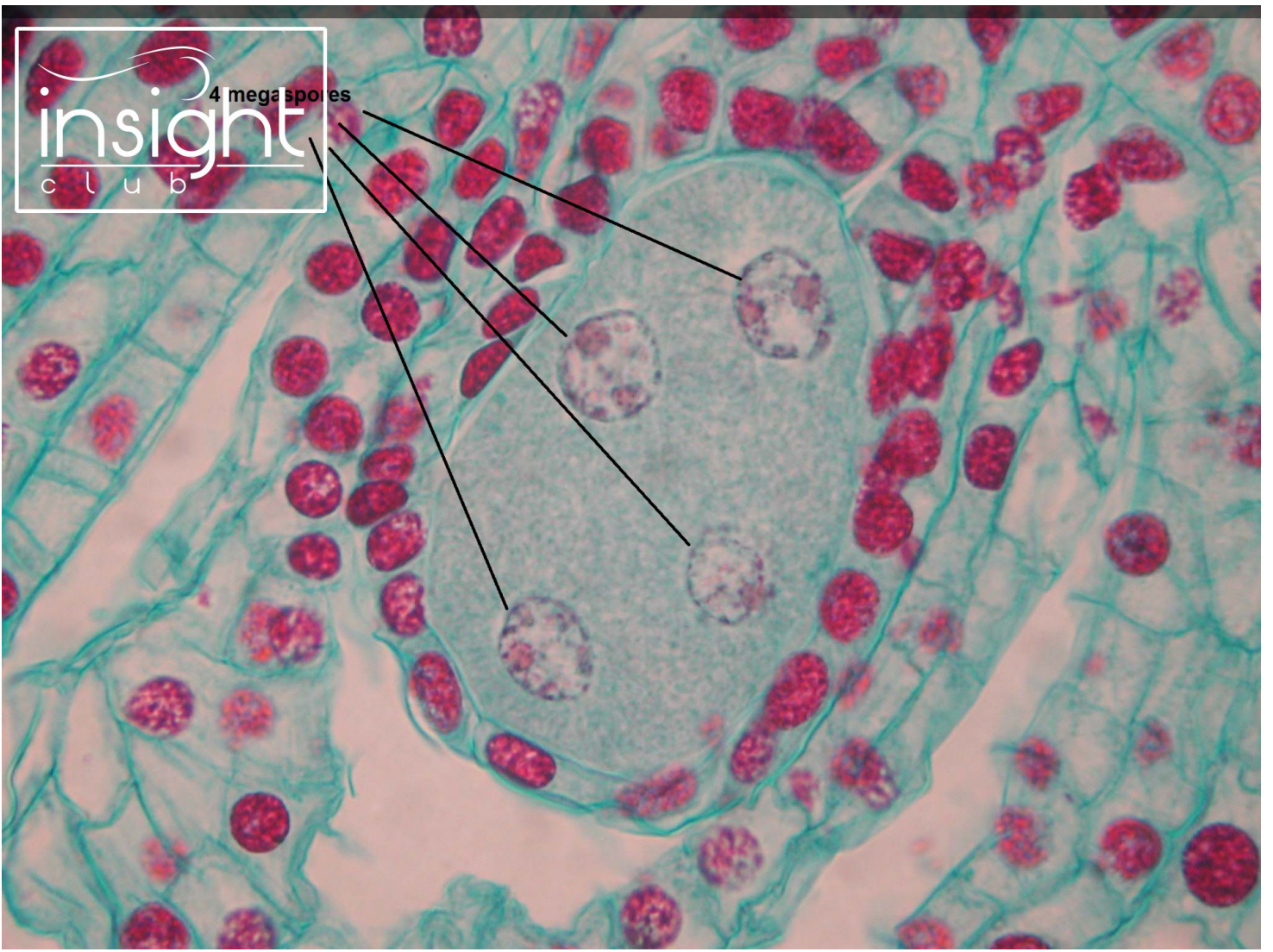




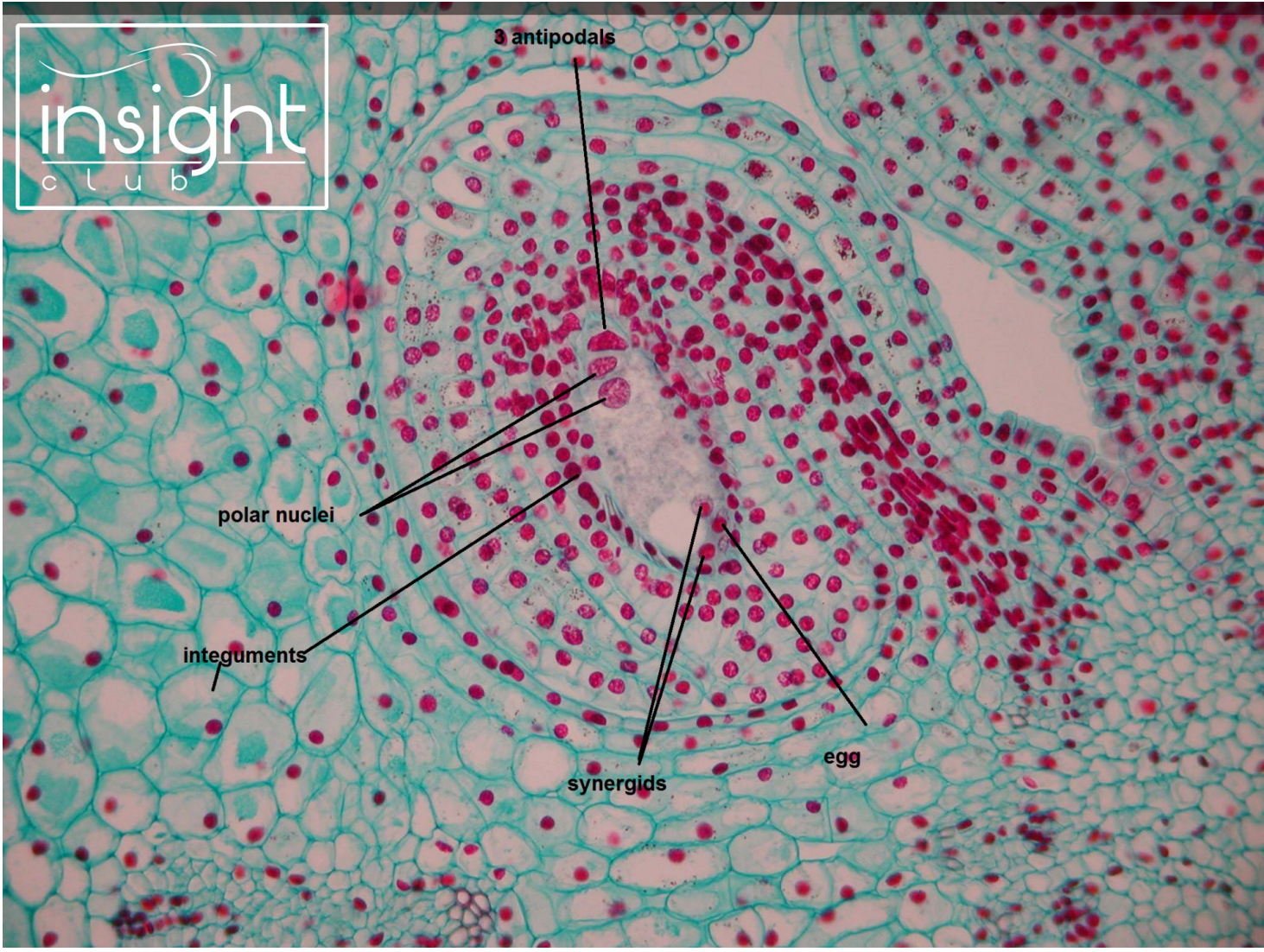












3 antipodals

polar nuclei

integuments

synergids

egg



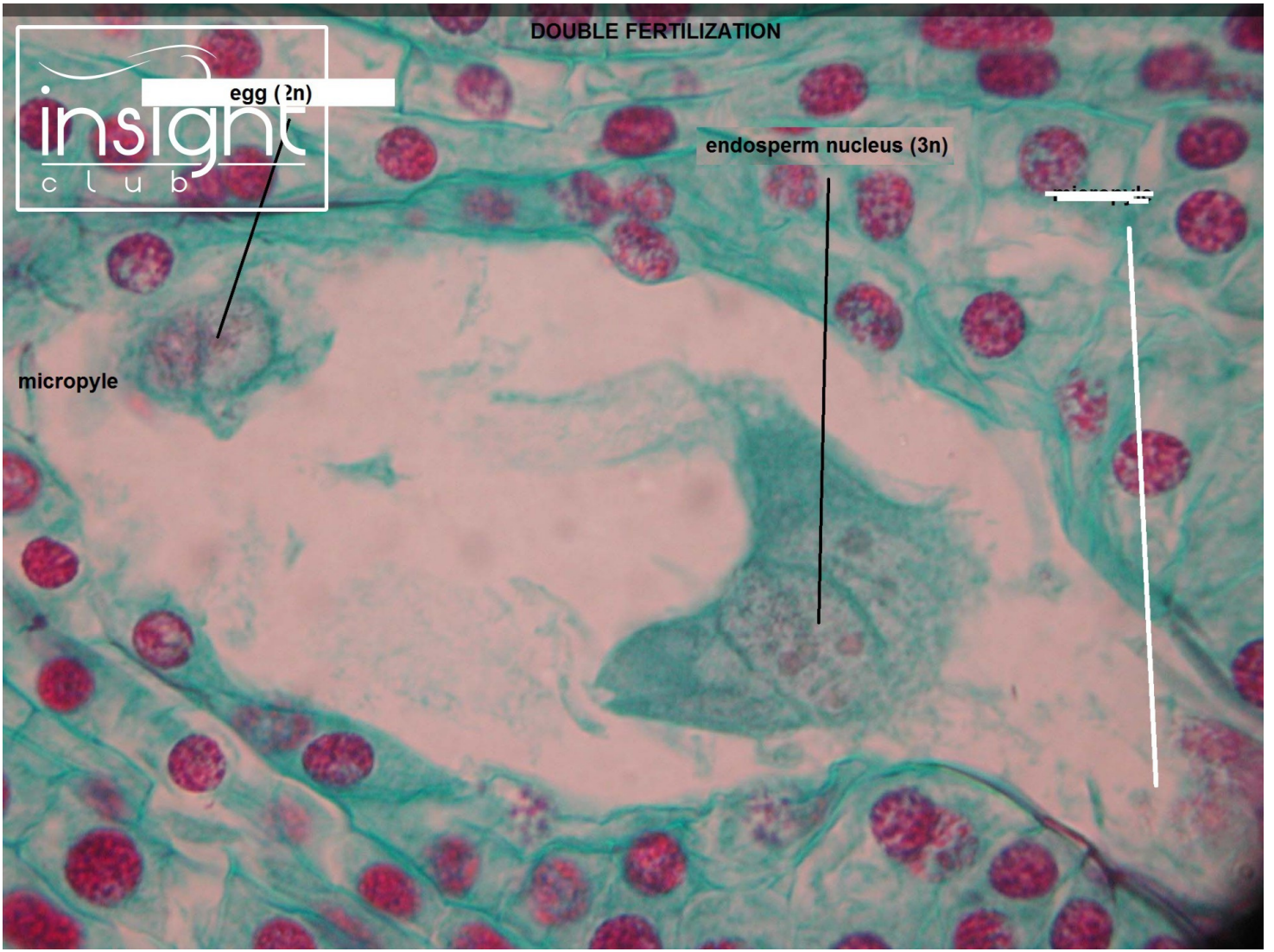
DOUBLE FERTILIZATION



egg (2n)

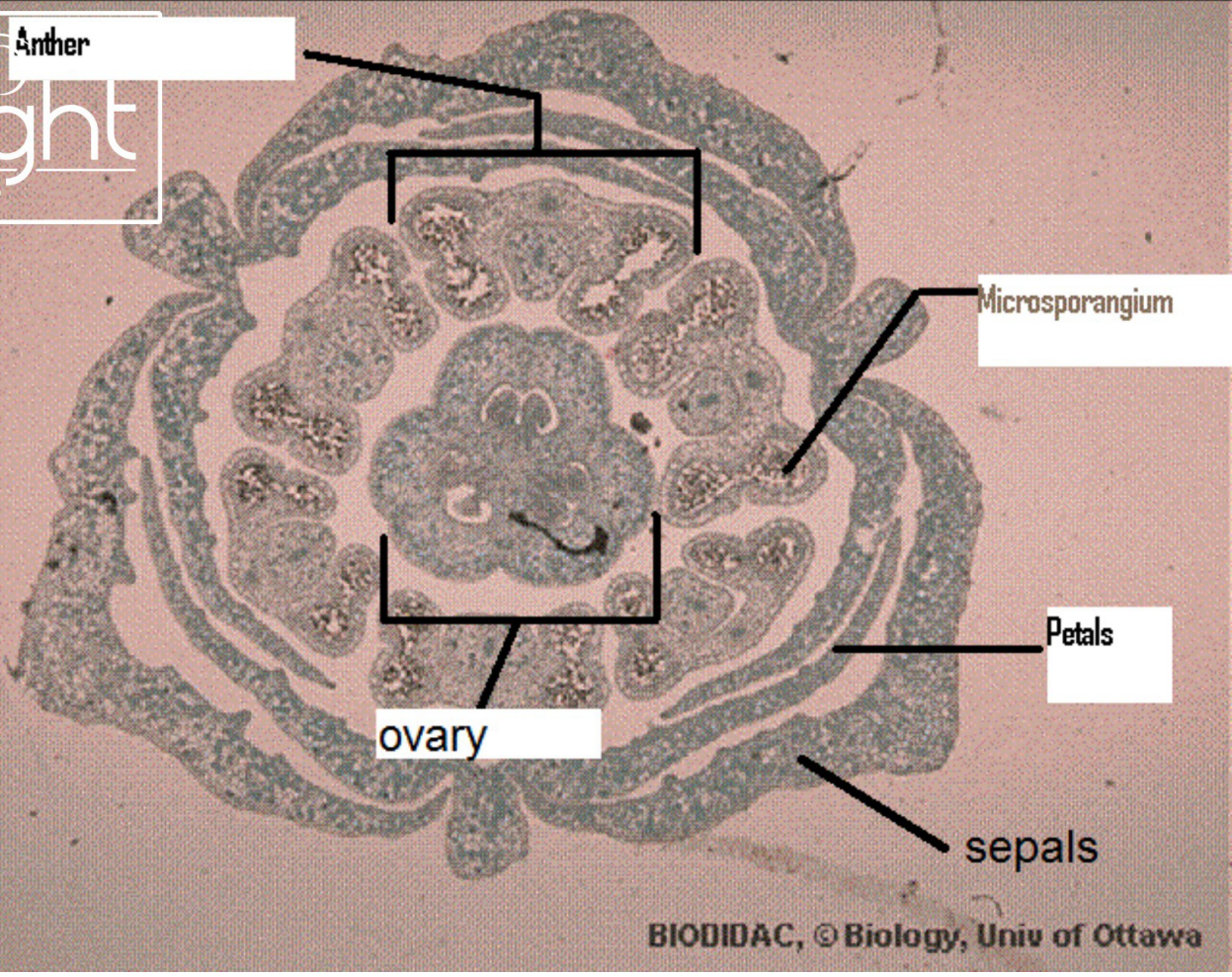
endosperm nucleus (3n)

micropyle





Anther



Microsporangium

Petals

ovary

sepals