

ARCHAEOLOGY 214
THE HUMAN STORY II
The New Stone Age or Neolithic Period
(12th to 4th millennium BC)

Final Examination

Date: June 11, 2004

Time: TWO hours

Instructor: H. Seeden

I
IDENTIFY THE
10 IMAGES
40 % (50 minutes)

☛ Human actors, several artifacts and art work, and a building are presented to you in the illustrations. Together they highlight main aspects of the world and life of early Neolithic or late Stone Age humans, their environment, and basic concerns and occupations.

☛ Briefly identify these one by one and in the order indicated: 1-10

1. Who or what is illustrated?
2. Where and when did it originate?
3. What story does the image tell?
4. Does the illustrated subject or object survive into the present?

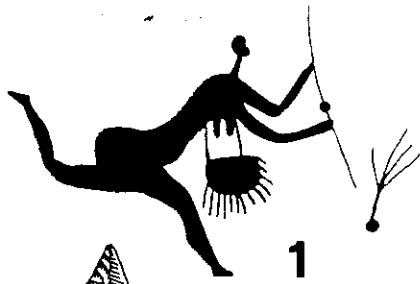
II
ESSAY QUESTION
60 % (70 minutes)

Describe some of the developments of 'neolithisation,' also called the first 'colonisation.' What do you know about those events?

When and how can ethnoarchaeological investigation help understand past societies?

Here are some key ideas to guide you in your story:

- Highlight main aspects of one or more Neolithic sites
- Attitudes towards the world in which we lived: Nature, plants and animals
- Changes in diet, economy and lifestyle
- New tools and equipment
- Long distance trade in rare raw materials
- House types and their significance (round to rectangular, domestic and public)
- Evidence for cult, ritual and ceremony, including burial practices
- Symbols or images of the divine
- Lessons learnt from surviving traditional communities



1



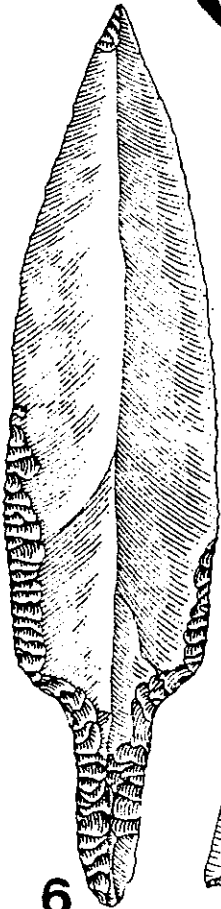
2



3



4



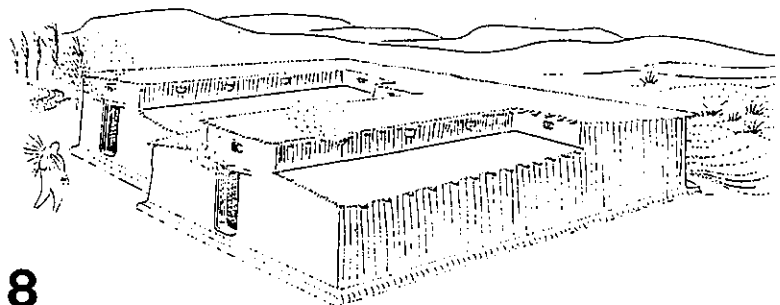
6



5



7



8



9



10