

- A light pen is used as an output device to extract information from the computer T F
- A laser printer sprays ink on paper to produce characters
T F
- Arithmetic logic unit is responsible for (+ - * /) and comparisons operations
T F

Printers used to print maps, images and architectural drawings are known as _____.

Computer departments within companies are often known as _____ departments.

Any part of a computer system you can see or touch is referred to as _____.

_____ is held on Hard Disk, CD-ROM, DVD and when used it will be loaded from disk into RAM.

The _____ is an electronic pathway on the motherboard used for data travel among the parts of a computer.

Printer resolution is measured in _____.

The _____ is an electronic pathway on the motherboard used for data travel among the parts of a computer.

Printer resolution is measured in _____.

Windows _____ is the successor to windows XP

Plug and Play

- a. was available with Windows 3.1
- b. automatically configures an interrupt for a new card upon installation
- c. makes it almost impossible for end-users to configure their own system
- d. all of the above

A network

- a. is a set of connected computers
- b. allows sharing of printers
- c. allows sharing of files
- d. all of the above

The two smallest types of computers are

- a. minicomputers and microcomputers
- b. laptops and palmtops
- c. PC and MAC
- d. none of the above

CPU speed is measured in

- a. MB
- b. MHZ
- c. bits
- d. RAM

Primary storage refers to

- a. CD, hard disk, floppy disk, etc.
- b. motherboard
- c. RAM and ROM
- d. a and c

An example of a peripheral device:

- a. keyboard
- b. screen
- c. USB
- d. tape backup drive

The type of port that is labeled as COM1 or COM2

- a. parallel port
- b. serial port
- c. infrared port
- d. none of the above

PCMCIA

- a. is a peripheral device for desktop computers
- b. is a tape used for backups
- c. supplies power to all parts of your computer system
- d. none of the above

Plug and Play

- e. was available with Windows 3.1
- f. automatically configures an interrupt for a new card upon installation
- g. makes it almost impossible for end-users to configure their own system
- h. all of the above

A printer that sprays ink onto the paper from tiny jets is known as

- a. laser printer
- b. dot-matrix printer
- c. inkjet printer
- d. non impact printer

The type of software that can update, manipulate and retrieve data from tables is called

- a. desktop publishing
- b. spreadsheet
- c. database management
- d. graphics

1 GB = _____ KB

- a. 1024 x 1024
- b. 8 x 1024
- c. 1024
- d. none of the above

A flat screen is an example of:

- a. CRT screen
- b. LCD screen
- c. an input device
- d. all of the above

When you drag and drop a file from the desktop to the Start button you would be

- a. Moving the file from the Desktop to Programs folder.
- b. Copying the file to the Programs folder.
- c. Creating a shortcut for the file on the Start menu.
- d. None of the above.

File searching utility could be reached

- a. by right-clicking on the Start button
- b. by clicking Start → Search
- c. by clicking Start → Settings → Search
- d. a and b

To get help in Windows 2000 on a certain item or with a certain task we can use

- a. F1 key
- b. ESC Key
- c. what's this "?"
- d. all of the above

T F The Restore button is only visible when the window has been maximized.

T F An intelligent terminal allows you to only send and receive data with no data processing capability.

T F A plotter is an output device.

T F To change the mouse button configuration and the tracking speed we choose the mouse icon from the My Documents folder.

T F DVD can have a capacity up to 17 GB

Arrange these computers in ascending order

- 1. Minicomputer _____
- 2. Microcomputer _____
- 3. Supercomputer _____
- 4. MainFrame _____
- 5. Palm PC _____

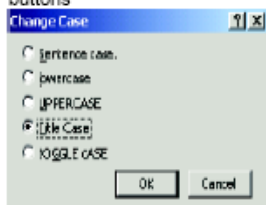
Arrange these ports in descending order

- 1. Bluethoth _____
- 2. Wifi _____
- 3. infrared _____
- 4. firewire _____

What is the keyboard short to close a window?

- A. F1
- B. Alt+F4
- C. Tab+F9
- D. F7

17. The dialog box illustrated uses 'radio buttons'

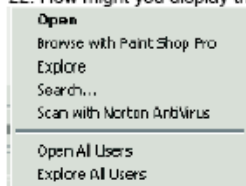


- A. True
- B. False

18. Within an application (such as WordPad), what keyboard shortcut would you use to save a file?

- A. Alt+S
- B. Ctrl+S
- C. Shift+S
- D. Tab+S

22. How might you display this popup menu?



- A. Click on the Start icon
- B. Double click on the Start menu
- C. Triple click on the Start menu
- D. Right click on the Start menu

23. What is the keyboard shortcut to display the Start menu?

- A. Alt+F4
- B. Ctrl+Esc
- C. Alt+Tab
- D. Ctrl+Tab

2. If you remove an entry from the Start Menu, it will also delete any files relating to that entry. True or false?

- A. True
- B. False

27. Mapping a drive means assigning a letter to a shared resource located on a networked computer. Once set up you will see little practical difference between using files on your local drive and the mapped drive. True or false?

- A. True
- B. False

