

Notre Dame University

Civil Engineering Cad
CEN 271
John Rahi

16-May-10
Test 2

1. Create the following Layers in Layer Properties Manager. (5Pts).

Layer Name	Color	Linetype	Lineweight
0-view	Magenta	Continuous	0.05
a-dim	Red	Continuous	0.15
0-anno-text	Yellow	Continuous	0.2
titleblock	White	Continuous	0.25
0-ref	white	Continuous	0.05
a-hatch	Magenta	Continuous	0.05

2. Create a new designed Titleblock (30 Pts).
3. Create many text styles, and apply your work to text and titleblock (50 Pts).
4. Create a new Page Set Up saved as (A4-your full name) , Plot area to Extent, Scaled 1:1 Create a new monochrome plot style table and use the lineweight written above for the pcp assignments. (5 Pts).
5. Xref 'b_samp' into your drawing. (5 pts).
6. Open one Viewport and scale it 1:20 (5 Pts)

NB, Make sure you use correct layers in your test.

Good Luck

THE DEBATE CLUB



Drawing Title:
 First Floor Plan

Checked by: G. Smith

Drawn by: John Doe

Scale: 1:1

Sheet No.:

A101

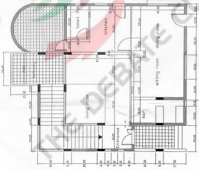
6

with the Questions. Draw the floor plan and apply your work according to the procedure

- 1- Test with a span of 2.5 (TL) with a Reaction Angle of 70
- 2- Test with a slant of 7 (RC) with a width factor of 4
- 3- Draw a circle (C), with Test angle (QC) horizontal
- 4- Test with Vertical Slanting
- 5- Test with obliquing angle of 30 (RC)
- 6- Test with Backwards and Upside- Down Slanting
- 7- Test with Different Points
- 8- Test using F2
- 9- Test using Altgr
- 10- You do not do written below with Open Tools New Windows and Use of 2
 - The number provided are standard than for
 - Temperature = 27°
 - Wind @ 8 MPH
 - Humidity at 7%
 - Do not use several large slants in the city which was mentioned at 10:00:00 or 10:15:00.

Scale = 1:50





THE DEBATE CLUB