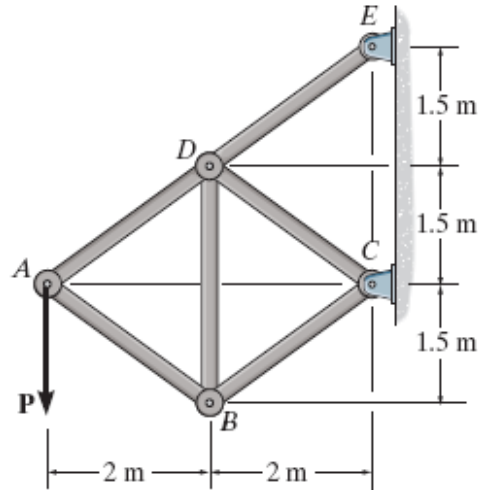


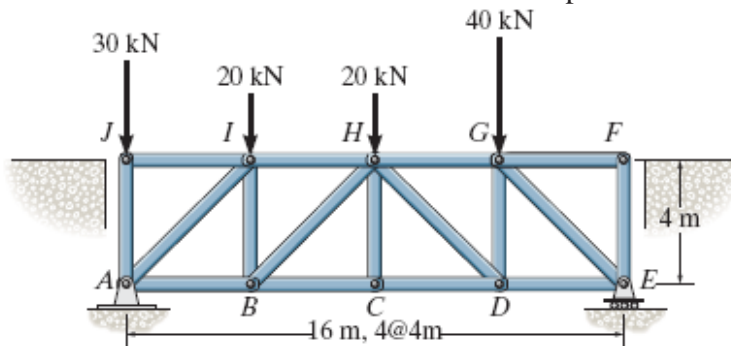
Homework # 5 (PART I)

Structural Analysis-“TRUSS”

6-16. Determine the force in each member of the truss, and state if the members are in tension or compression. $P=5\text{ kN}$ (Using method of Joints)



6-32. The Howe bridge truss is subjected to loading shown. Determine the force in members HD, CD, and GD, and state if the members are in tension or compression.



*6-49. Determine the force in members kJ, KC, and BC, and state if the members are in tension or compression.

